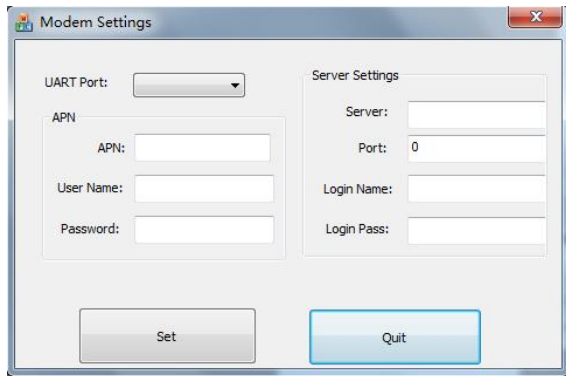


# How to set APN and Service Account on a GPRS adapter

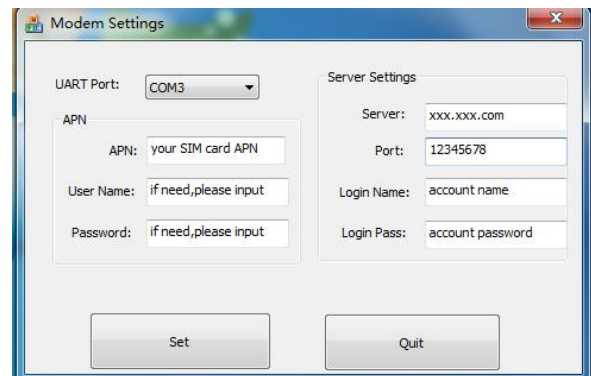
G1 GPRS adapter is a great PC to cell phone network tool for data communication. If you have some application service account, here will teach you how to set it on a GPRS adapter.

1. Run the “install.bat” in file folder “Modemsettings” at first, then can run “modem settings.exe” PC setting tool. There will pop up small window as below picture 1.

**Notice:** If your PC OS is WIN7, Please firstly run “cmd.exe” by administrator, then run “install.bat” in command line.



Picture 1



Picture 2

2. Use the RS232 cable (packed in G1 giftbox, it's standard cross type RS232 cable) to connect the G1 and PC. When connection ready, power on the G1 ( !!! 5V DC power adaptor only !!!)
3. Select the UART Port based on your PC configuration. For example, normal desk PC with RS232 port will be COM1, USB-RS232 tool connected with a laptop will be COM3 or COM4, etc ...
4. APN (Access Point Name) setting: with the right APN setting, your GPRS adapter can access the cell phone network. For example, the GLO Mobile APN is “gloflat”, user name is “flat”, password is “flat”. (Cell phone company will give the right information)
5. Server account Setting: (Picture 2 as a reference.)  
Server: server address  
Port: server port  
Login Name: your GPRS dongle account name.  
Login Pass: your GPRS dongle account password.
6. Checking all detail setting is right, then press “set” button to start setting.
7. Start Use: power off the G1, connect a RS232 cable between the G1 and receiver. And insert your SIM card to the G1 SIM slot, then can power on.
8. Activate receiver's Y4/Twin protocol, and wait a moment, the encrypt channel will be open.

Just enjoy it!